



SAGE MANOR

Of Bowral

GUEST PACK

Once you see our property you'll notice we are a little luxe. Guests feel a little spoilt in all our comforts and intentional inclusions.



Sage Manor of Bowral expands over 3 acres at the base of Mt Gibraltar Bowral. We are very well located for hiking trails, and close to town for any lazy shopping, or last-minute needs. We have a fire pit on site and 2 outdoor ground meditation spaces.

The conservatory/yoga studio is an all-purpose space. The studio is north facing with beautiful light and energy and will easily hold up to 16 mats/easles/8 massage beds. It has a variety of meditation cushions, bolsters and meditation chairs.

Throughout the Manor there is a sunroom, casual living area, separate reading library, a second living space, large dining area that fits up to 18. Overall there are plenty of comfortable spaces, and lounging areas for guests to enjoy some quiet spaces, inside and outside.

Externally there are 3 alfresco eating and relaxing areas that cater to all the seasons. A fire pit, hammocks and an amazing fallen tree that highlight the back gardens and meditation areas.

During hotter months we have the Summer Forest for personal and small group connections back to nature. And we are fully airconditioned.

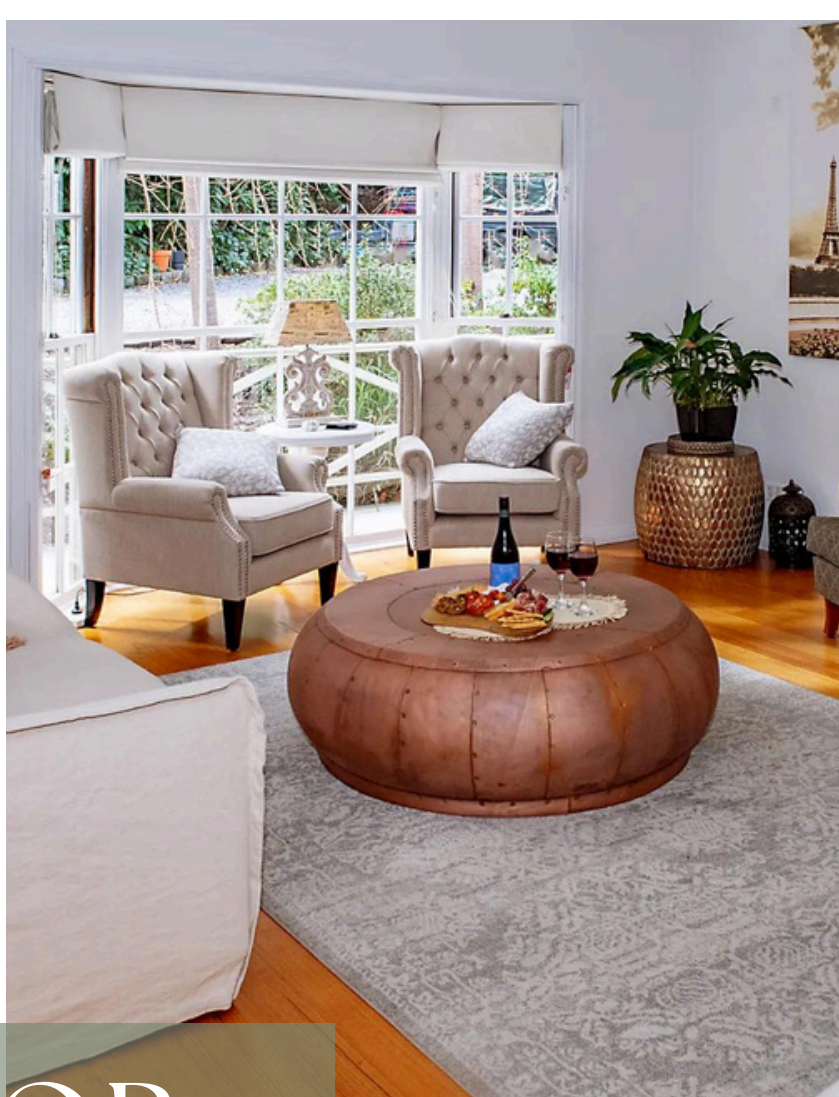


THE PROPERTY



THE PROPERTY





THE MANOR



Sage Manor has 8 bedrooms (6 x twin) and 2 singles. 4 full bathrooms and 2 separate toilets.

The accommodation rooms are thoughtfully decorated with their own personalitand the luxe feel.

Rooms are set with organic or cotton bedding, and each guest their own set of plush bath towel, hand towel and face washer. Our 5* reviews of bedding, and the property say it all.

The beds are new, hotel executive quality, luxurious and supportive. They are all Exec King Singles or Super King if the room set as so. It's took 12 months to find the right configuration of room, light, privacy, comfy connecting lounging options and a multipurpose space for workshops, yoga, painting etc.

Sage is also ideally situated in-between Sydney and Canberra.



Accommodation

01

BIRCH ROOM

2 x King Single Beds or 1 x Super King
\$240 per night 1 person or
\$170 per person if 2 in room

02

WOLF ROOM

2 x King Single Beds or 1 x Super King
\$240 per night 1 person or
\$170 per person if 2 in room

03

GARDEN SUITE

2 x King Single Beds or 1 x Super King
\$210 per night 1 person or
\$160 per person if 2 in room

04

DAISY

2 x King Single Beds
\$180 per night, 1 person in room

05

FOX SUITE

1 x King Single Bed
\$180 per night, 1 person in room

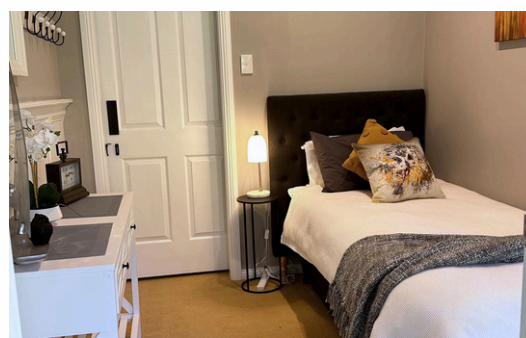
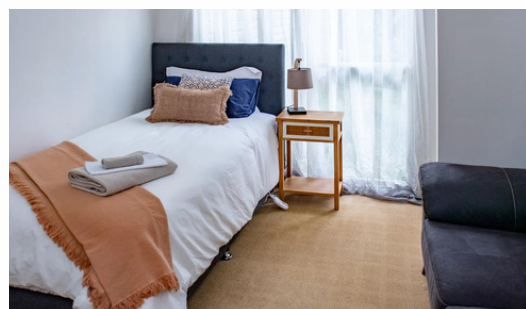
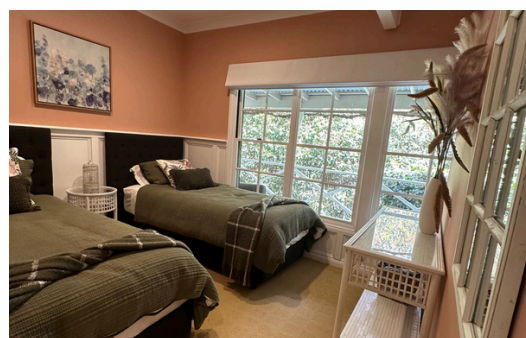
06

THE OWLS NEST

1 x King Single Bed
\$180 per night, 1 person in room

**All room bookings
include
Continental Breakfast
daily.
Minimum 2 night stay**

ACCOMMODATION ROOMS



Rooms 07/08

ON THE GROUNDS OF SAGE MANOR IS KOOKABURRA COTTAGE

2 x King Single Beds or 2 x Super King Rooms
Fully self contained cottage - full kitchen, bathroom and
separate 2nd toilet. Lovely back deck and BBQ facilities.



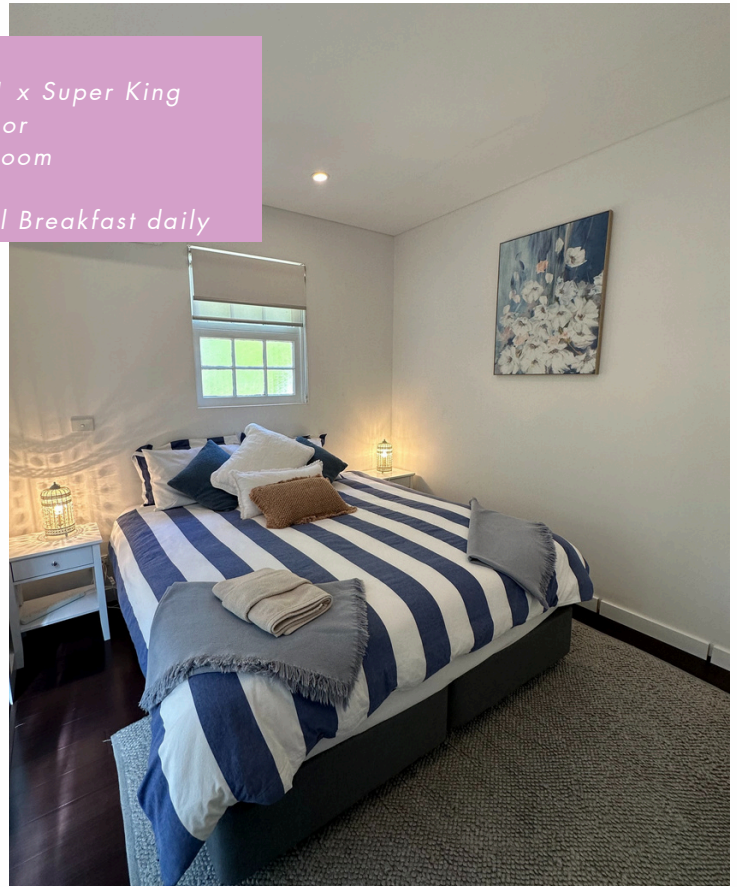
COTTAGE ROOMS

2 x King Single Beds or 1 x Super King

\$260 per night 1 person or

\$180 per person if 2 in room

Price includes Continental Breakfast daily



To secure your room, please contact us as we book out quickly.

50% deposit secures your choice, balance due 1 week prior to your event.



Thanks for considering Sage Manor

Email: jason@sagemanorbowral.com.au with your room preference and mobile number.

We look forward to seeing you at Sage Manor soon.

0418228789 - Kylie
0437576323 - Jason

@sagemanorbowral
www.sagemanorbowral.com.au